



GAT MONTHLY MEMBERSHIP PROGRESS REPORT

Results as of: 5/31/2024

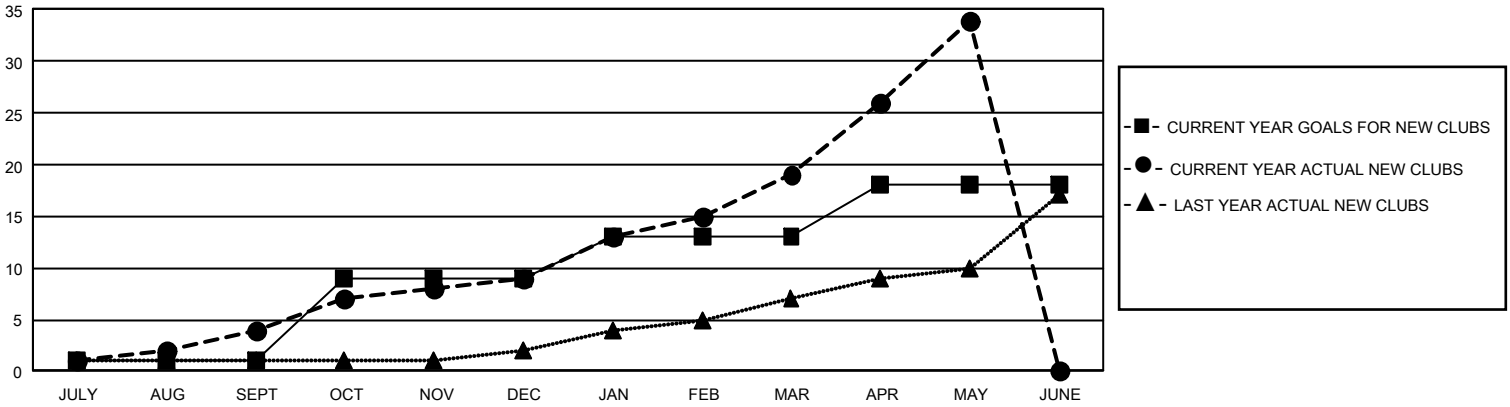
GMT Constitutional Area 4, Group I

REPORT DOES NOT INCLUDE CLUBS IN UNDISTRICTED AREAS.

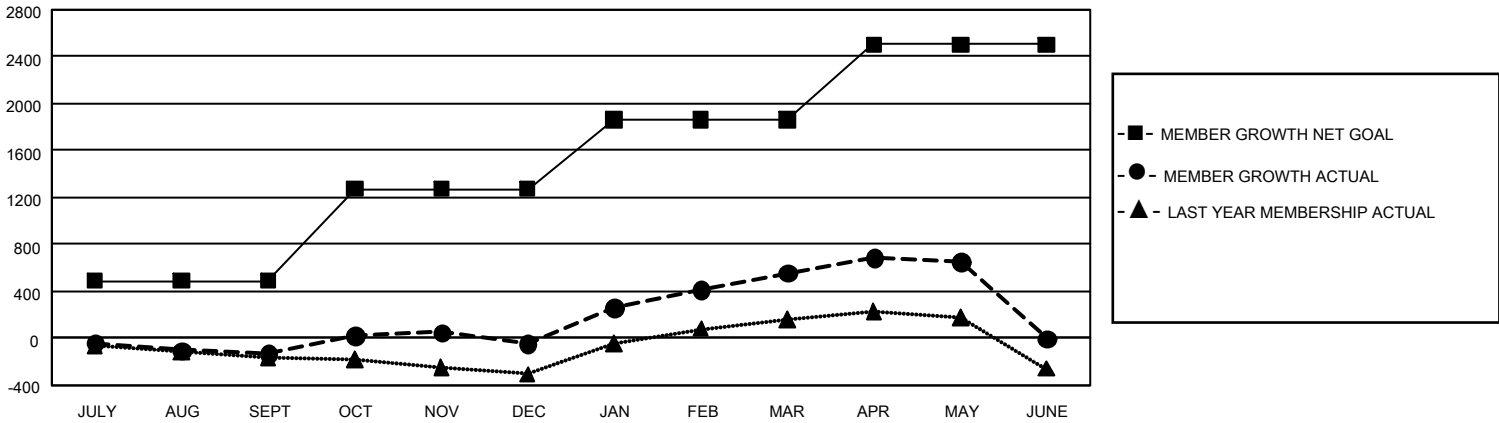
Clubs			
RESULTS FOR 2023-2024			
QUARTER	NEW CLUB GOAL	NEW CLUBS	DROPPED CLUBS
JULY/AUG/SEPT	3	4	9
OCT/NOV/DEC	24	5	4
JAN/FEB/MAR	12	10	0
APR/MAY/JUNE	15	15	11

Members			
RESULTS FOR 2023-2024			
QUARTER	MEMBER GROWTH NET GOAL	MEMBER GROWTH ACTUAL	DROPPED MEMBERS ACTUAL (including transfers)
JULY/AUG/SEPT	490	845	864
OCT/NOV/DEC	784	1,147	965
JAN/FEB/MAR	590	1,302	628
APR/MAY/JUNE	640	780	614

GOALS AND ACTUAL NEW CLUBS CUMULATIVE



GOALS AND ACTUAL MEMBERS CUMULATIVE



DROPPED CLUBS: 24	958 CLUBS OF 1,411 ADDED 1 OR MORE NEW MEMBERS	<u>GENDER DISTRIBUTION</u>	
		MALE	27,312 (69.03%)
<u>DROPPED MEMBERS</u>		FEMALE	12,251 (30.96%)
		NON BINARY	0 (0.00%)
DECEASED	337	PREFER NOT TO ANSWER	4 (0.01%)
CLUB CANCELLED	160	TOTAL FAMILY UNIT MEMBERS 2,624	
OTHER	2,569		
TOTAL	3,066	FAMILY MEMBERS PAYING HALF DUES 1,357	

[CLICK HERE FOR CUMULATIVE MEMBERSHIP DATA](#)